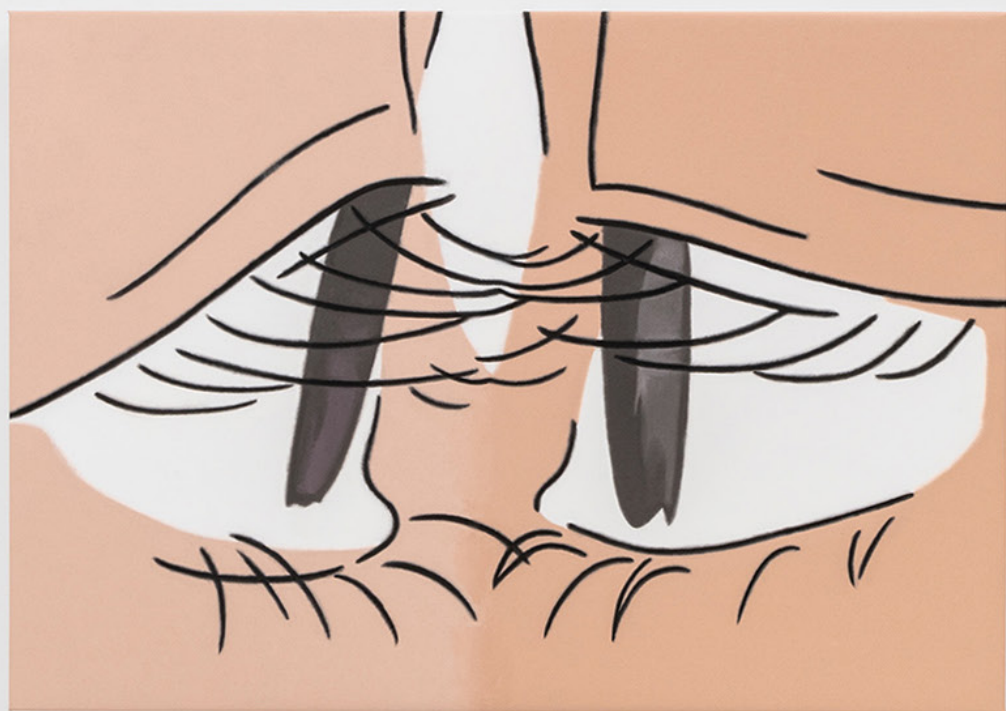


LILOU (LIXIA)
EYE CONTACT

SEPT 24 - OCT 29, 2022







zZ, 2022
Oil on canvas
51 x 35.5 in
130 x 90 cm
(LX0009)
\$8,000

France-based artist/illustrator, Li Xia, also known as Lilou_Oh_Yeah on social media (b. 1991, Chongqing, China), works primarily in oil and watercolor. Her work explores ephemeral moments and commonplace objects in daily life, expressed through carefully composed planes of flat colors and nuanced strokes. Both representational and imaginary spaces come alive in Li's work, with her sensitive attention to the ordinary and the fleeting.

Lilou lives and works in Rouen, France. Lilou attended the Université de Paris 1 Panthéon - Sorbonne (MFA, 2021), l'École Supérieure d'Art et Design Le Havre-Rouen (ESADHaR) (MFA, 2020) and Sichuan Fine Arts Institute (BFA, 2014). She has exhibited internationally at venues such as the LONG Museum, Minsheng Art Museum, Bananafish Gallery in Shanghai, China, Villa des Arts in Paris, France and Rola Bola in Rouen, France.

Lilou's images, while clearly figurative, are not descriptive in any overt manner. She frames and blows up quotidian details in daily life. In her images, quiet moments of human interactions and scenes of domesticity, both realistic and imaginary, come alive: a mundane lamp, a grocery list, kissing lovers, a bite into a fresh strawberry, people sharing fruits, a tiny piece of tacky scotch tape... All seemingly insignificant details are magnified and explored with a warm touch of humor. Lilou's tableaux emanate from real life. Cinematically framing banal details, her work invites the viewer into vignettes that capture the tension of familiar and overlooked moments.



Bread 3, 2021
Glazed stoneware
4 x 3 x 4 in
10.2 x 7.6 x 10.2 cm
(LX0022)
\$1,200



Green Lamp, 2022
Watercolor on paper
mounted on wood panel
19.5 x 27.5 in
50 x 70 cm
(LX0018)
\$4,000



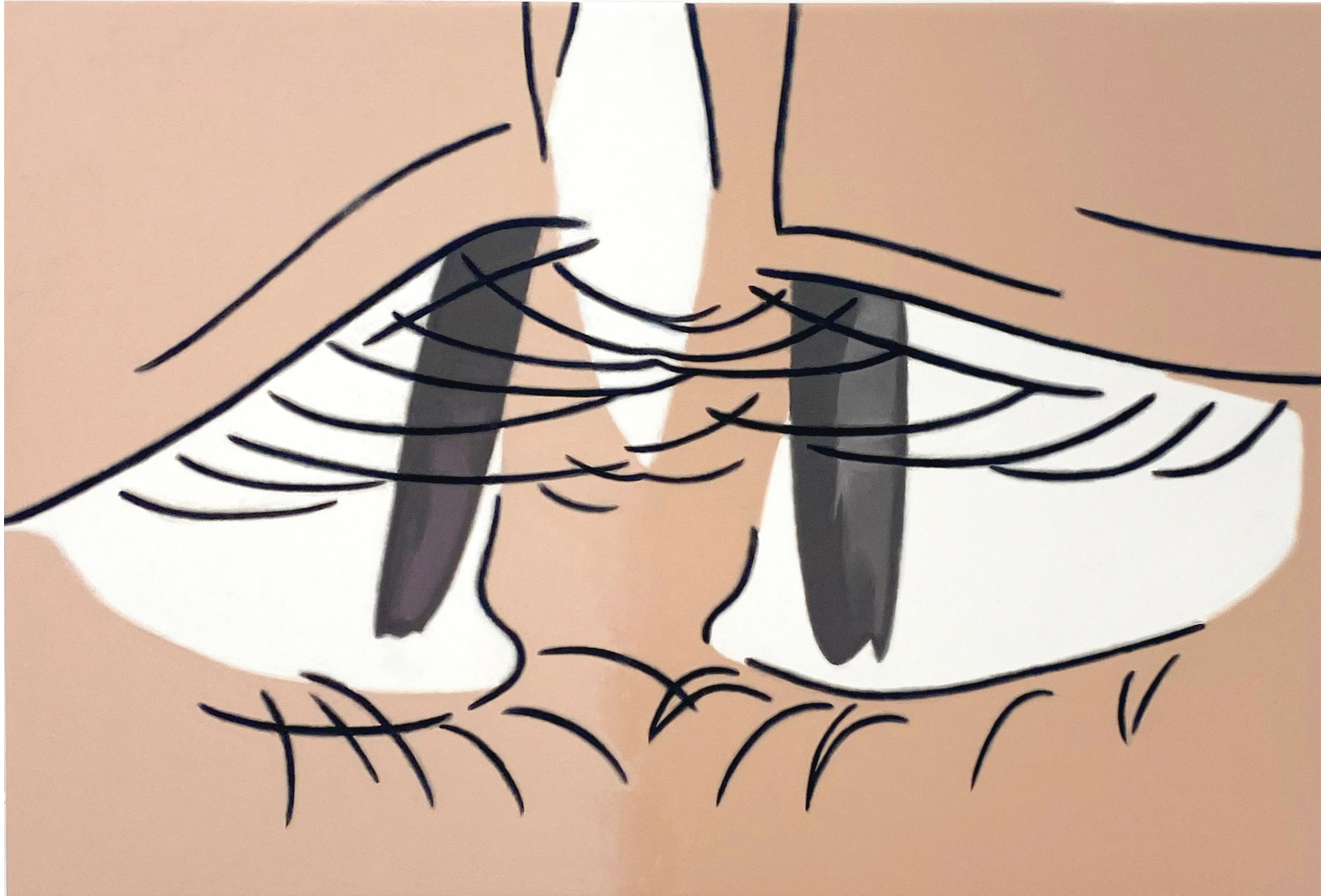
Lamp (corner), 2022
Watercolor on paper
mounted on wood panel
20 x 28.5 in
51 x 72 cm
(LX0017)
\$4,000



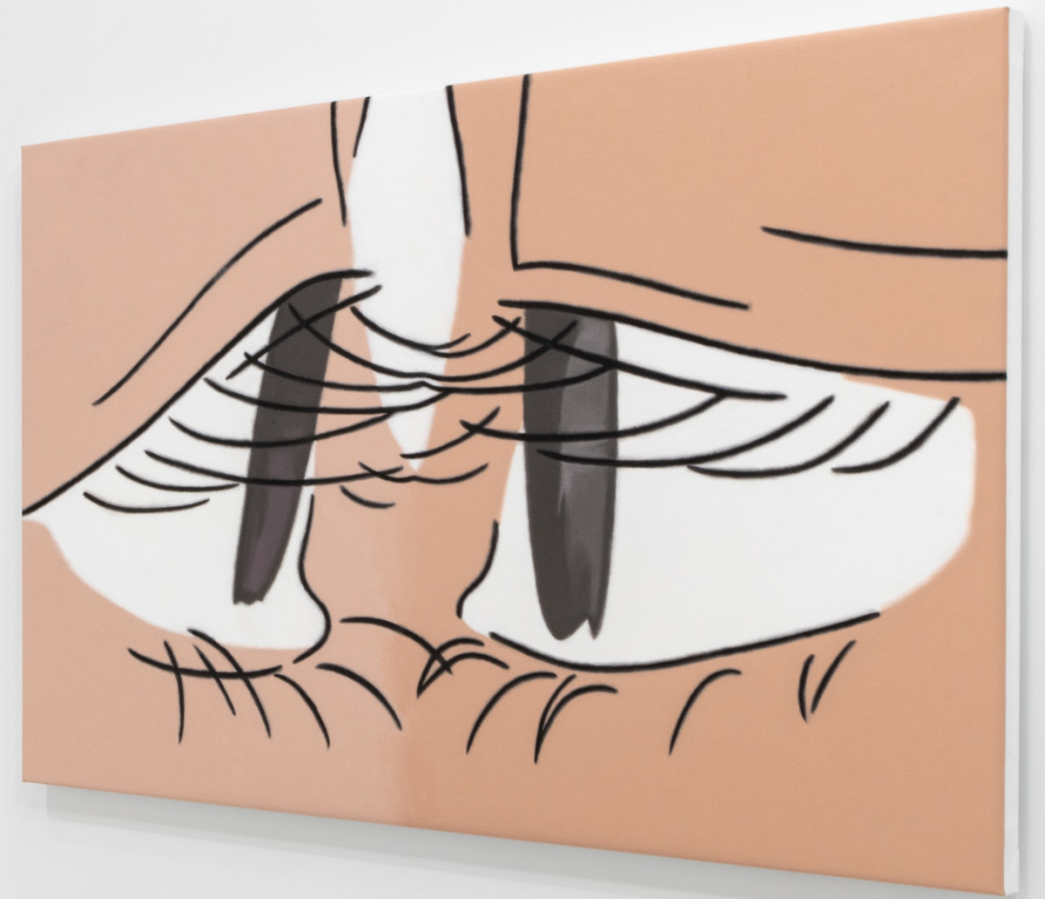
Green Lamp, 2022
Watercolor on paper
mounted on wood panel
19.5 x 27.5 in
50 x 70 cm
(LX0018)
\$4,000



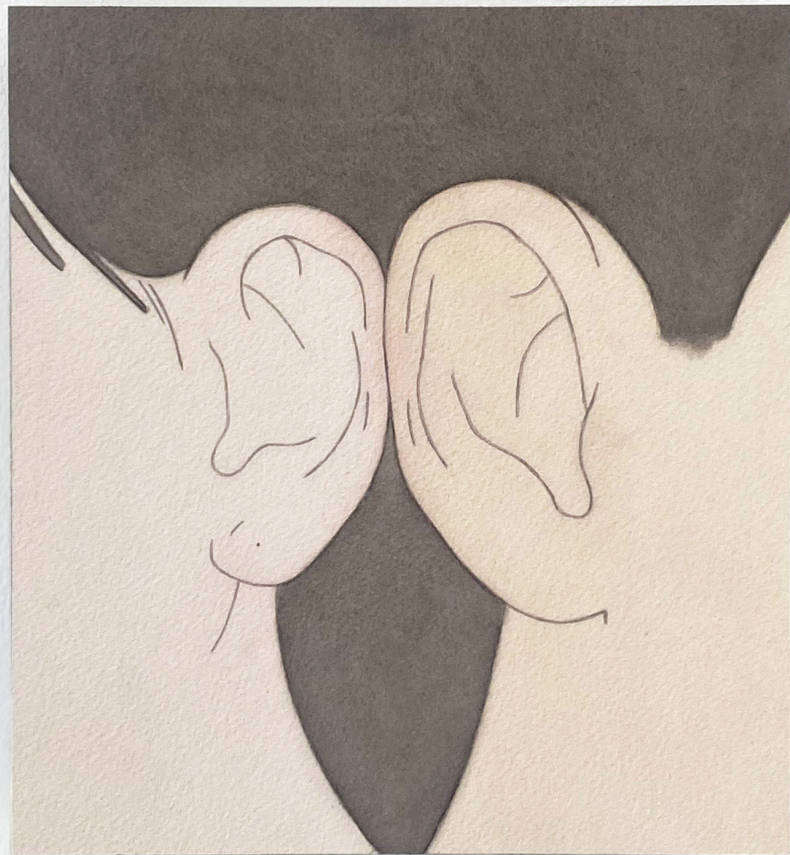
Girl reading, 2018
Glazed ceramic
3 x 7 x 3.5 in
7 x 17.8 x 8.3 cm
(LX0026)
\$1,200



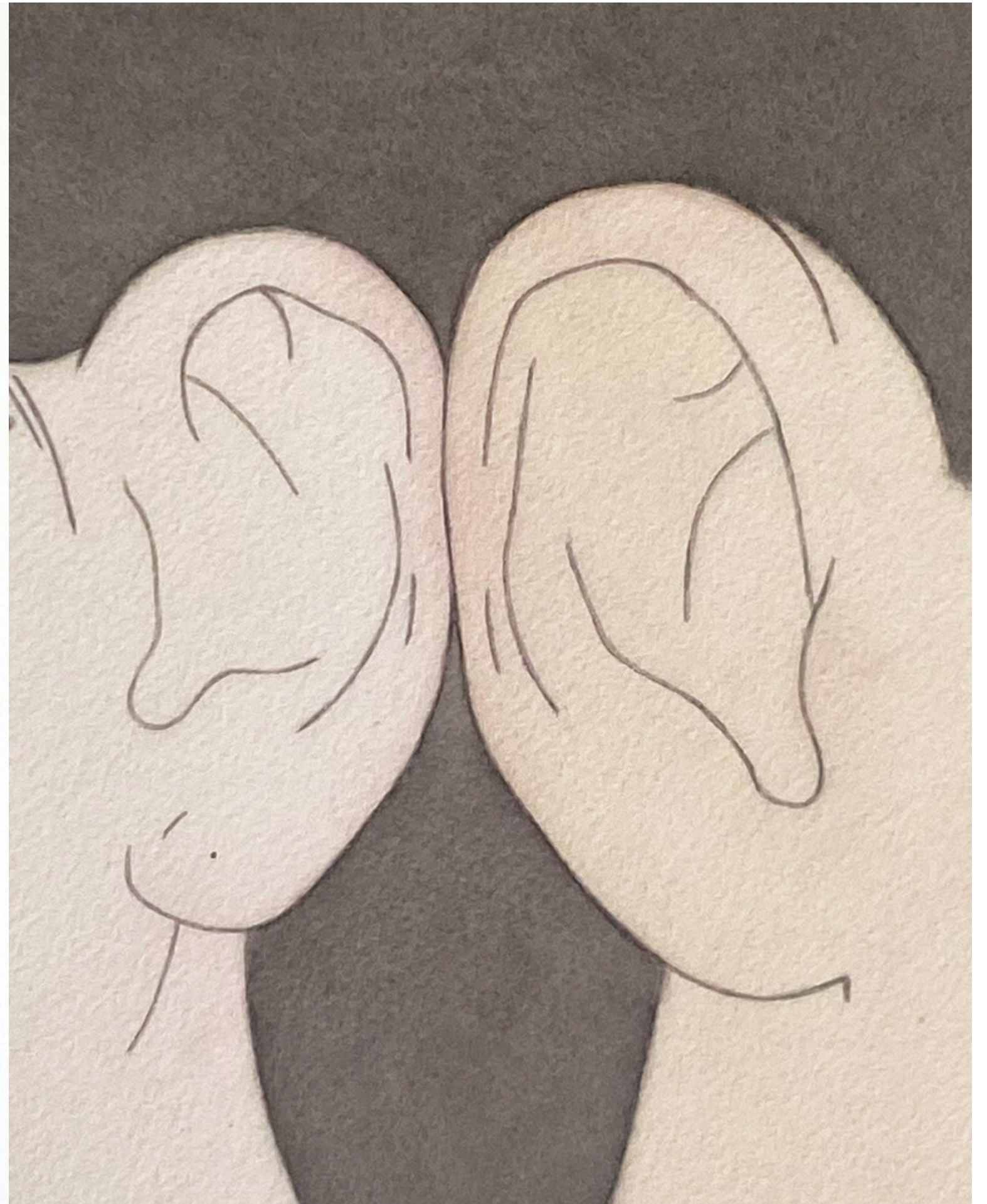
Eye Contact (Kiss), 2022
Oil on canvas
51 x 35.5 in
130 x 90 cm
(LX0010)
\$8,000



In *Eye Contact - Butterfly Kiss* (2022), a large oil on canvas painting and the show's titular work, Lilou depicts the tender moment when two kissing lovers' eyelashes gently touch, the two faces melting into each other. Here, subtly different colors are used to represent the skin tones of the two faces. As the artist states, "The color palette reminds me of Jiefangbei - People's Liberation Monument in my hometown, Chongqing. It's where the two rivers, Yangtze and Jialing, meet. The two rivers have different colors, yet when they merge, they do not change each other's colors."



Lovers (14 Février), 2021
Watercolor on paper
mounted on wood panel
8.5 x 9.5 in
21.6 x 24.1 cm
(LX0015)
\$2,000



Lilou completed *Lovers (14 Février)*, an intimately-sized watercolor work mounted on wood panel, on Valentine's Day in 2021. It is a close-up of an intimate moment- two lovers' ears touching. Here, Lilou explores painting's full capacity to give fleeting moments, such as this one, a permanent visual representation. Close-ups are powerful, shortening the distance of viewing, making the experience dynamic and intimate. To Lilou, magnifying isolated frames leads her into a world similar to meditation.



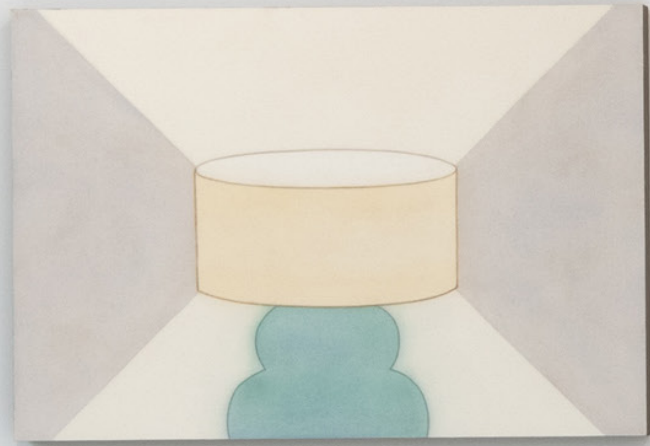
Ballon Blanc, 2018
Ceramic, acrylic
5 x 3.5 x 4.5 in
12.7 x 8.9 x 11.4 cm
(LX0025)
\$1,200



Lait concentré 1 (condensed milk), 2022
Watercolor on paper
mounted on wood panel
12 x 9 in
31 x 23 cm
(LX0028)
\$1,500



Lait concentré 2 (condensed milk), 2022
Watercolor on paper
mounted on wood panel
12 x 8.5 in
31 x 21.3 cm
(LX0029)
\$1,500





Lovers (Condensed Milk Version), 2022
Watercolor on paper
mounted on wood panel
27.5 x 16 in
70 x 40.5 cm
(LX0027)
\$4,000





Bread 1, 2022
Glazed stoneware
6 x 4 x 1 in
15.2 x 10.2 x 2.5 cm
(LX0020)
\$1,200



Bread 2, 2021
Glazed stoneware
3.5 x 4.5 x 7 in
8.9 x 11.4 x 17.8 cm
(LX0021)
\$1,200



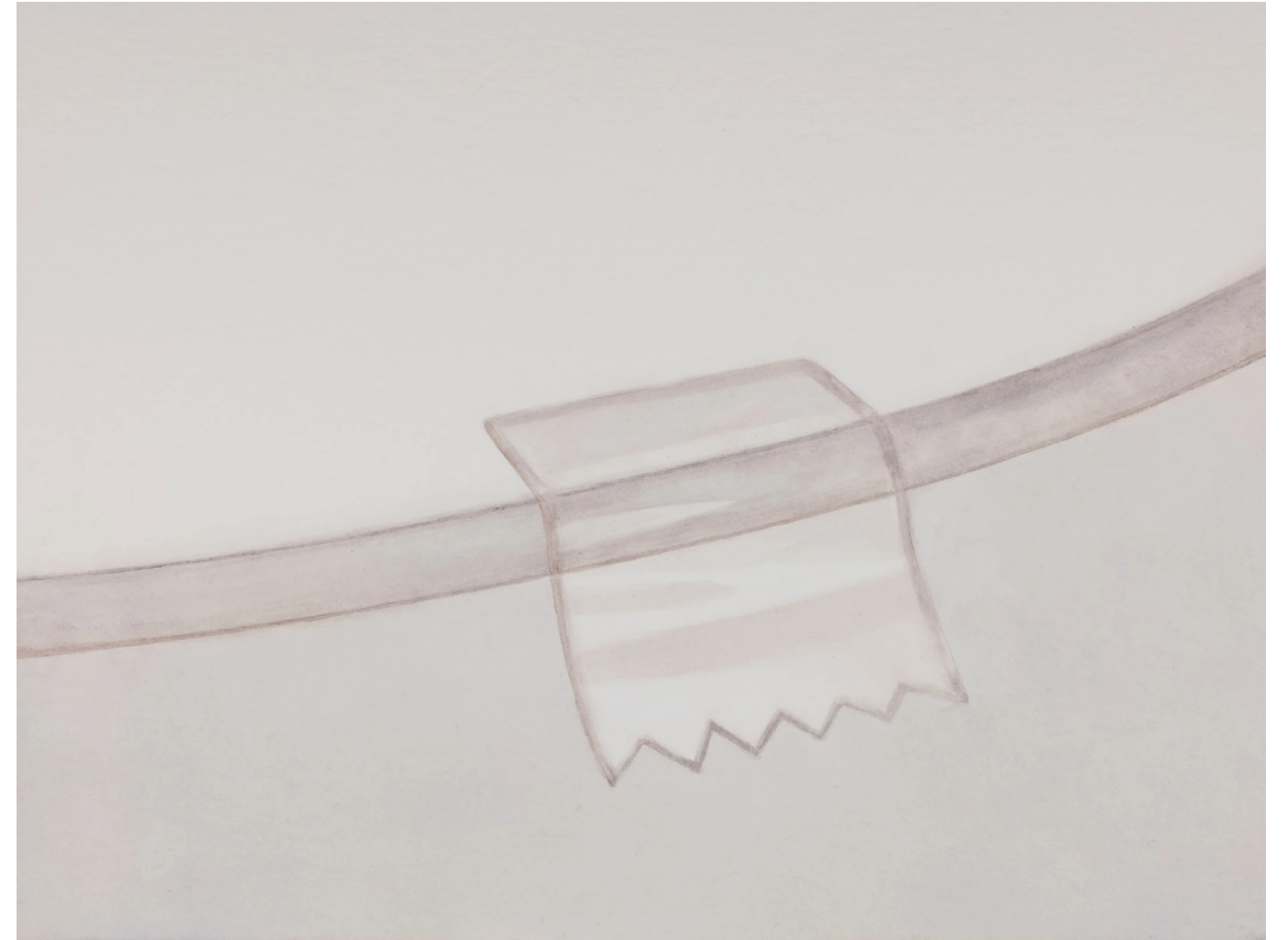
Bread 3, 2021
Glazed stoneware
4 x 3 x 4 in
10.2 x 7.6 x 10.2 cm
(LX0022)
\$1,200



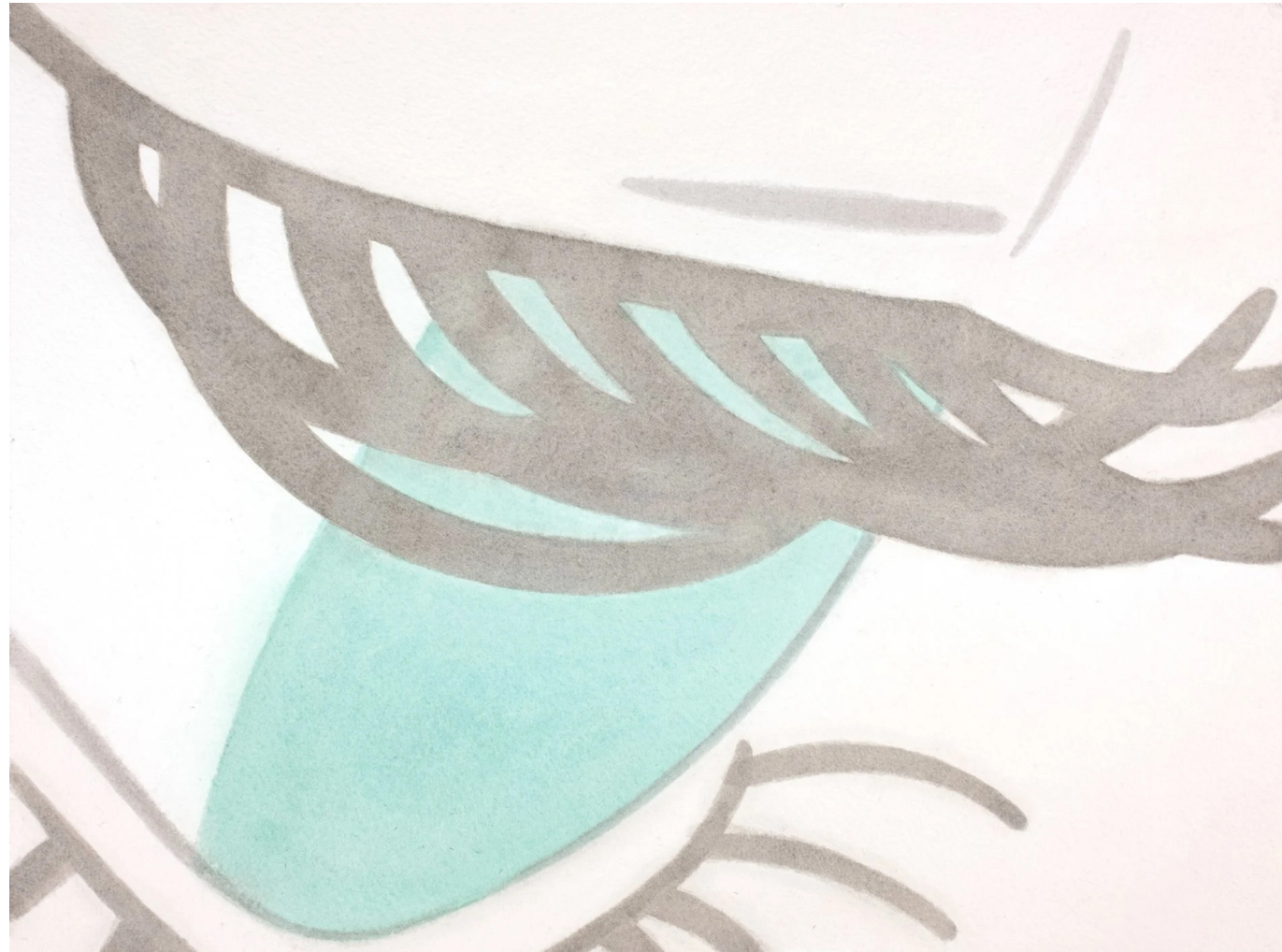
Bread 4, 2021
Glazed ceramic
5 x 4 x 4 in
12.7 x 10.2 x 10.2 cm
(LX0023)
\$1,200



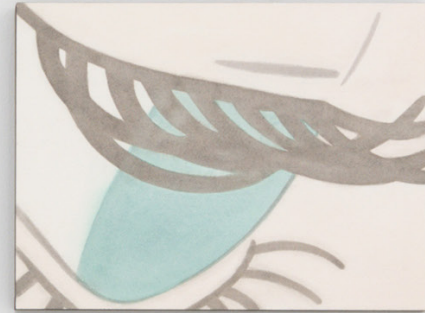
Precise and sensual, these meticulously constructed scenes are imbued with a sense of tranquility and surreal humor. Though decidedly lacking a distinct plot in her narrative, Lilou leaves traces that suggest something has just happened. Lilou's pictures not only record events, they capture feelings - emotions buried deep in our consciousness. These neatly cropped-up scenes celebrate analog, delicious and, sometimes, forgotten moments in life. They act as a sort of visual fossil - evidence of our human existence - how we live, work and love.



Scotch tape, 2022
Watercolor on paper
mounted on wood panel
9.5 x 12.5 x 1 in
24 x 32 x 2.5 cm
(LX0016)
\$1,500



Green Eyes, 2022
Watercolor on paper
mounted on wood panel
9 x 12 x 1 in
23 x 31 x 2.5 cm
(LX0012)
\$1,500



We may find ourselves already familiar with Lilou's fictional subjects. To the artist, a character is only a signifier, and she intentionally leaves out representational details that may give away the gender, racial or social identity of her protagonists. The figures in her work do not look directly at the viewer. They look away. They are detached. It is very important for the artist that the objects and figures in her work remain in their most natural state. They don't pose for anyone. They are not being watched. This world is an open space that anyone can enter freely. In this world, bread dances, condensed milk speaks lover's discourse and objects shift through stages of personification.





Ballon Blanc, 2018
Ceramic, acrylic
5 x 3.5 x 4.5 in
12.7 x 8.9 x 11.4 cm
(LX0025)
\$1,200

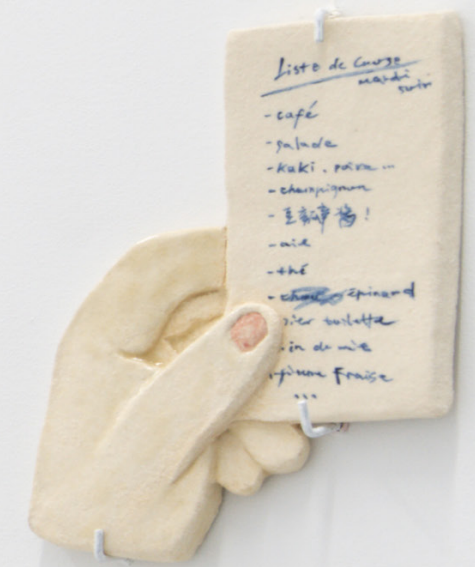


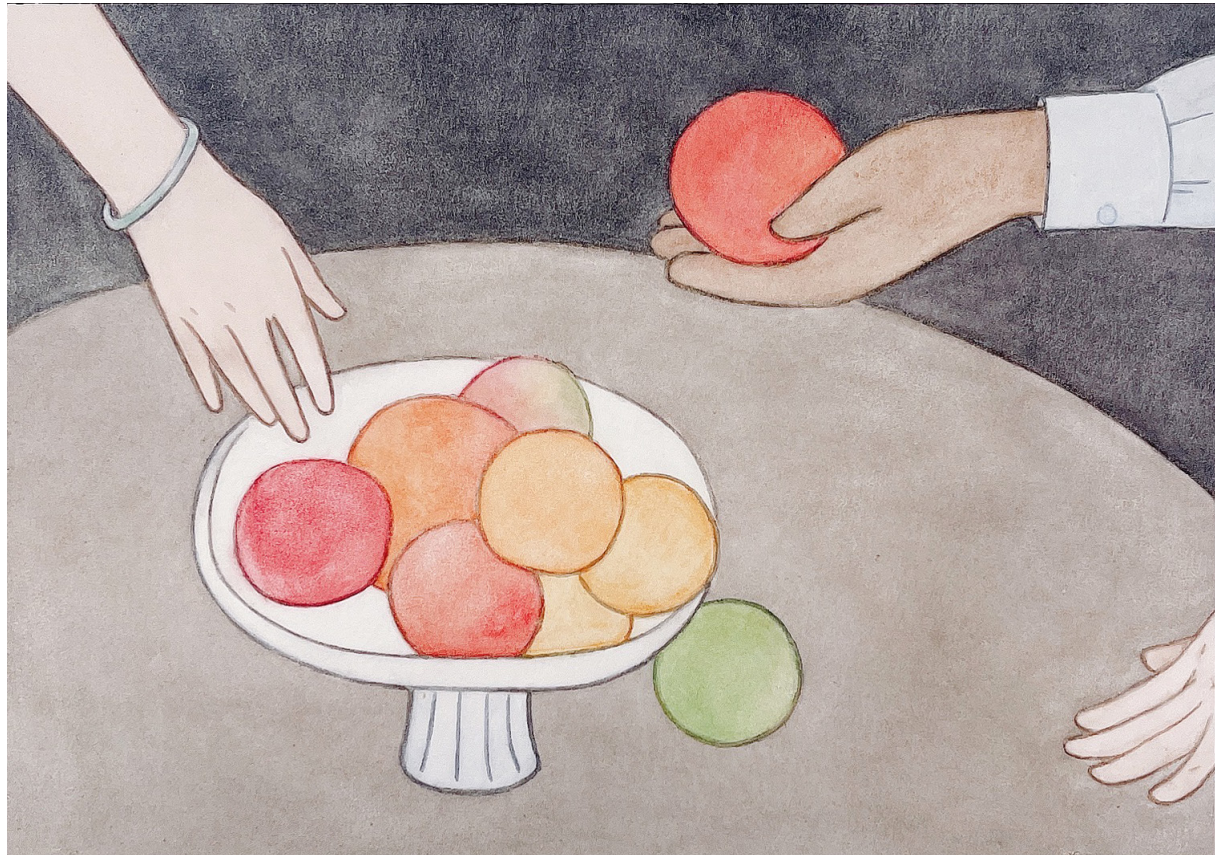
Grocery list, 2021
Glazed ceramic
6.5 x 5 x 0.5 in
16.5 x 12.7 x 1.3 cm
(LX0024)
\$1,500

"I think in images,"



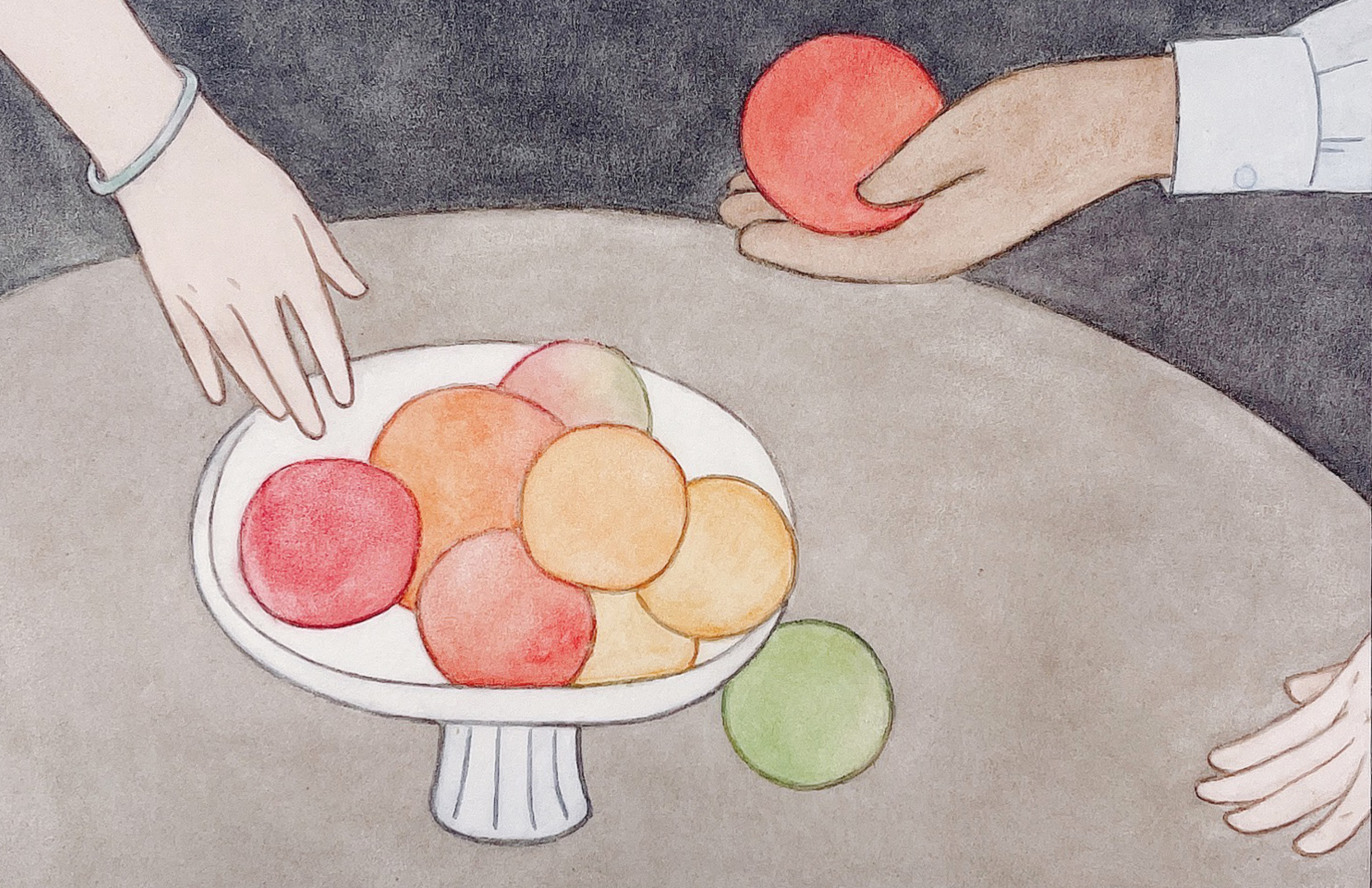
"I like painting moments that do not show cause and effect, before and after. They are in a state of flux."





July (Juillet), 2020
Watercolor on paper
mounted on wood panel
7.5 x 10 in
18.7 x 26 cm
(LX0030)
\$2,000







LILOU (LI XIA)

Born in 1991 in Chongqing, China
Lives and works in Rouen, France

EDUCATION

- 2021 MFA, L'Université de Paris 1 Panthéon - Sorbonne
- 2020 MFA, L'École Supérieure d'Art et Design Le Havre-Rouen (ESADHaR)
- 2017 BFA, L'École Supérieure d'Art et Design Le Havre-Rouen (ESADHaR)
- 2014 BFA, Sichuan Fine Arts Institute

SOLO EXHIBITIONS

- 2022
Eye Contact, Yi Gallery, New York, USA
Troop fort, Rola Bola, Rouen, France
- 2019
Sleepy Beauty, Bananafish Gallery, Shanghai, China
- 2017
LOOK AT ME, Hi art space in LONG Museum, Shanghai, China

SELECT GROUP EXHIBITIONS

- 2022
Between emotion and sanity, Cubism Gallery, Shanghai, China
AND, ALREADY, WORDS, Yi Gallery, New York, USA
- 2021
VitaminArt, Villa des Arts, Paris, France
Frida and My Imagination, Female Artists Born After 1985, LONG Museum, Shanghai, China
- 2018
ASIANOW, presented by Tong Gallery + Projects, Paris, France
RELAX, MOCA Yinchuan, Yinchua, China
- 2016
The John Moores Painting Prize, Minsheng Art Museum, Shanghai, China

Eye Contact

Lilou 绿李

YI GALLERY

254 36TH ST, SUITE B634 BROOKLYN, NY 11232 INDUSTRY CITY, BLDG 2

@YIGALLERYNY GALLERY-YI.COM INFO@GALLERY-YI.COM

